



Windsor Road, Ealing

Centrally located in the heart of Ealing Broadway is this large raised ground floor one bedroom period conversion apartment that spans the entire width of an imposing period residence and is presented in excellent decorative order.

Measuring approx. 581 square foot, the property provides ample size for a buyer(s) looking for a good amount of space in a central Ealing location where you can enjoy the range and depth of the town centre on your doorstep.

in brief the property has a large reception, large separate eat in kitchen, master bedroom and family style bathroom and comes with long lease and no onward chain.

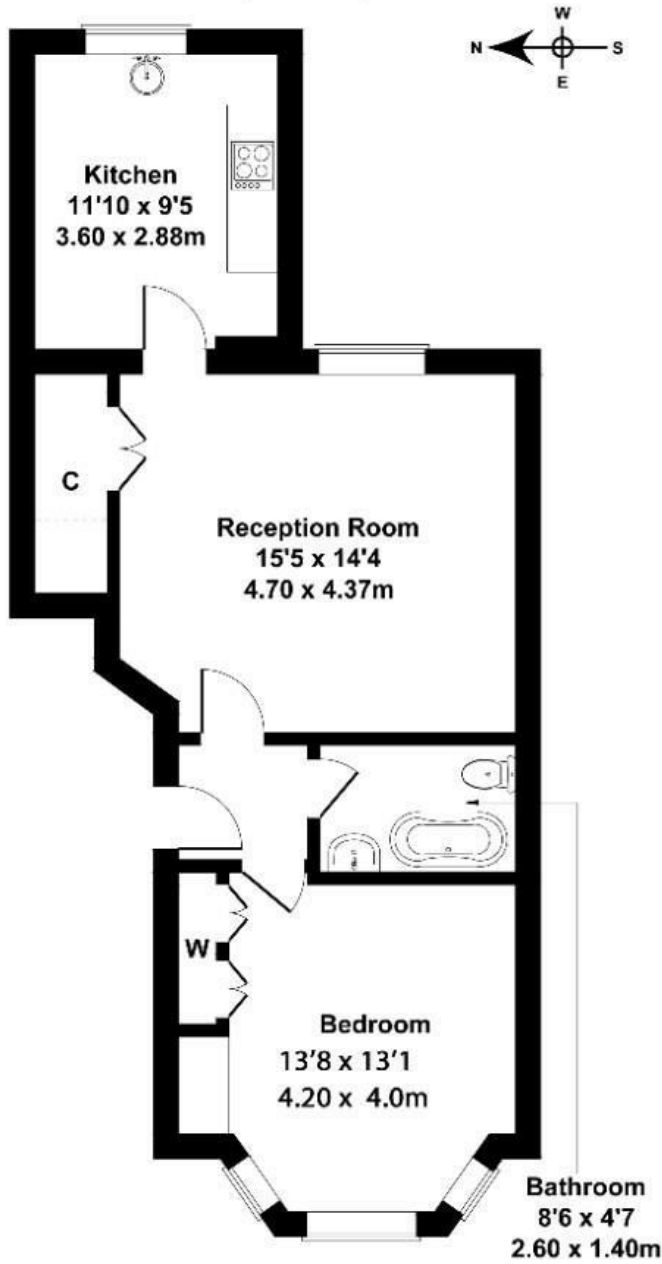
The property also benefits from a long lease, permit parking and no onward chain.

- Large one bedroom period conversion flat
- Raised ground floor
- Close to 600 sq ft
- Master sized bedroom
- Excellent condition throughout
- Close to Ealing Broadway Station

£450,000

Windsor Road

Approximate Gross Internal Area
581 sq ft - 54 sq m



GROUND FLOOR

Not to Scale. Produced by The Plan Portal 2024
For Illustrative Purposes Only.

Energy Efficiency Rating		Current	Potential
Very energy efficient - lower running costs			
(92 plus) A			
(81-91) B			
(69-80) C			
(55-68) D		66	
(39-54) E			
(21-38) F			
(1-20) G			
Not energy efficient - higher running costs			
England & Wales	EU Directive 2002/91/EC		